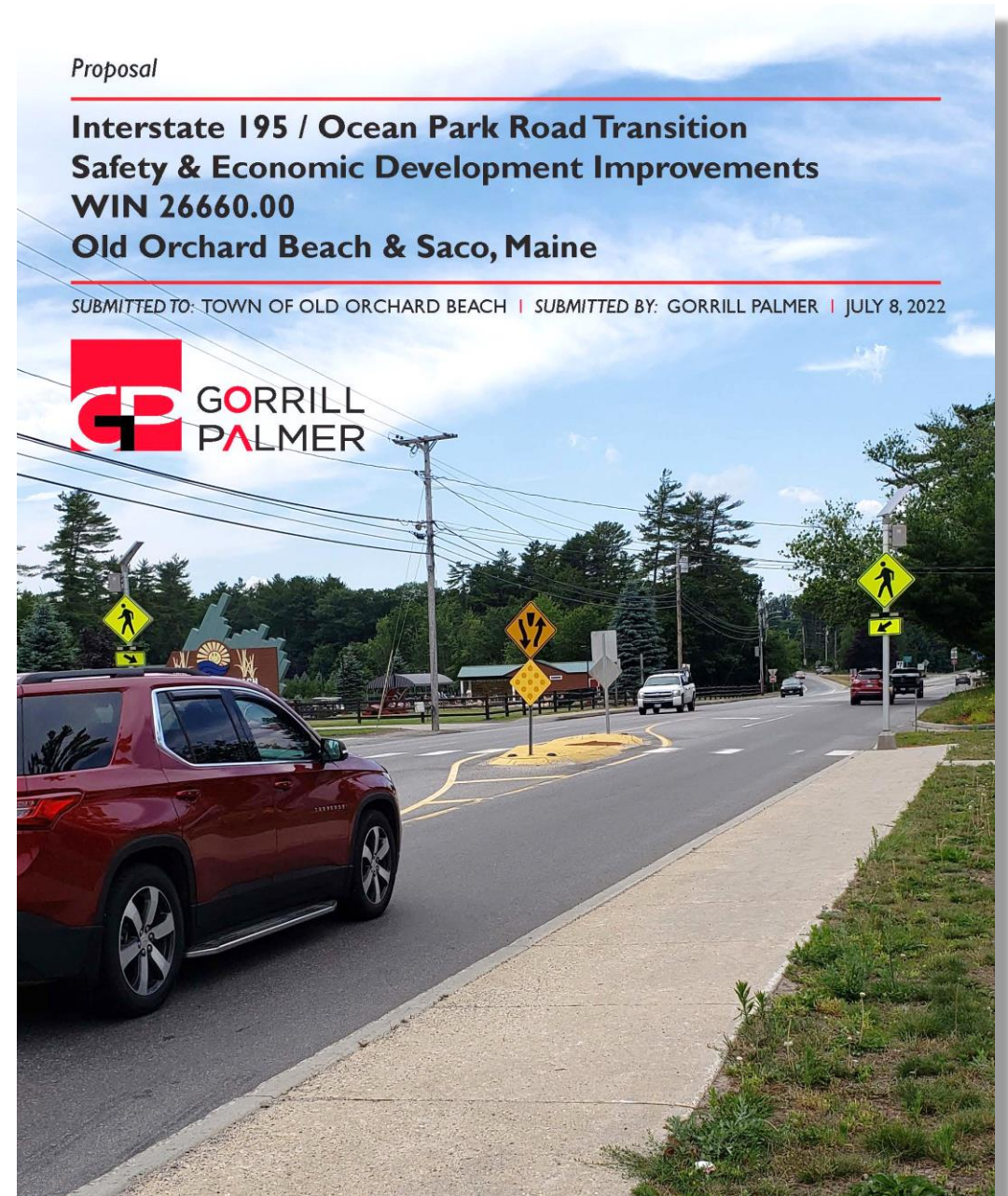


Old Orchard Beach & Saco

Safety & Economic Development
Improvements Study

Public Information
Meeting #2

June 17, 2024



Study Team

(Planning Partnership Initiative)

Consultant

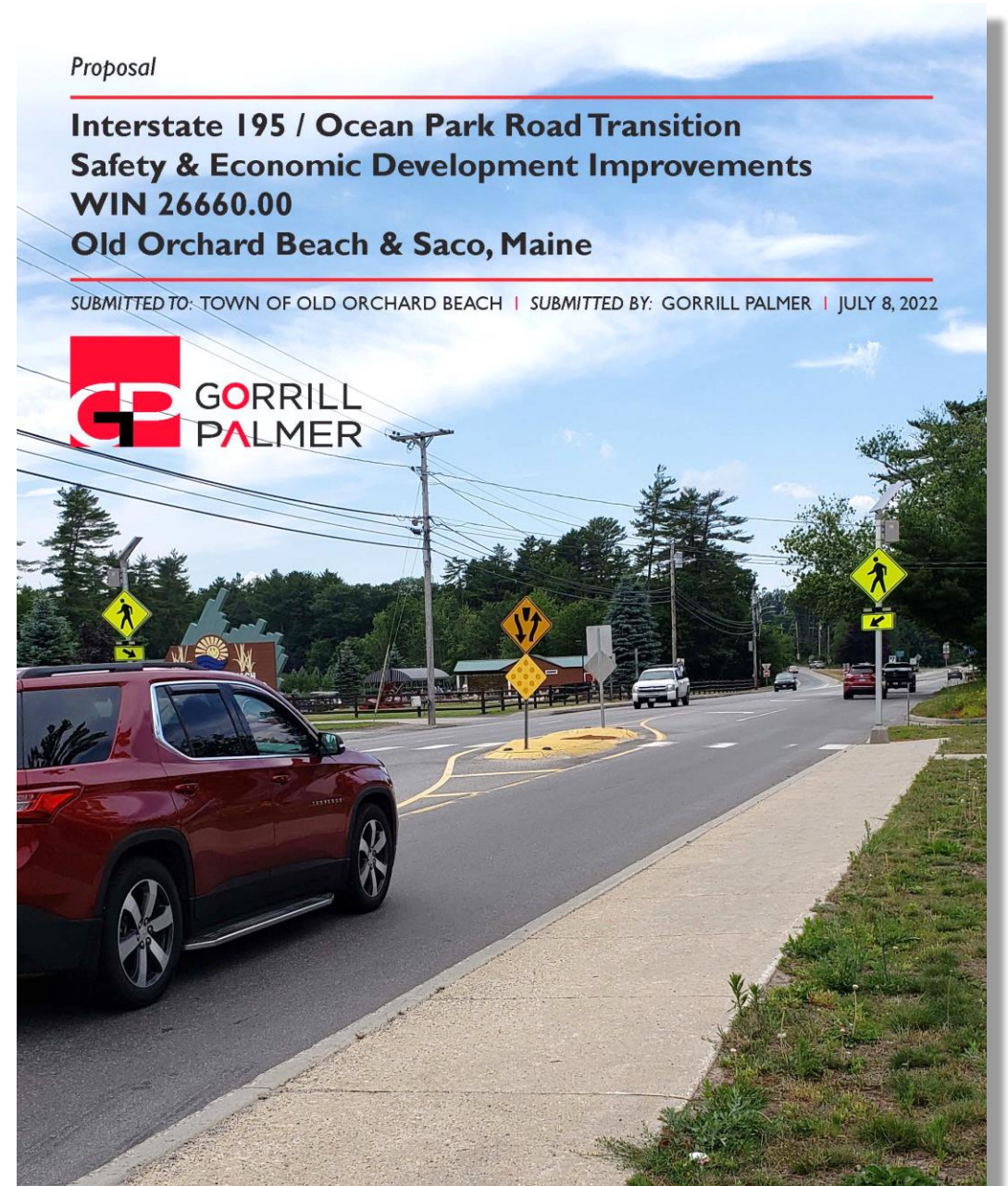
- Gorrill Palmer (Don Ettinger)
- North Star Planning
- James Tasse Consulting
- Aceto Landscape Architects

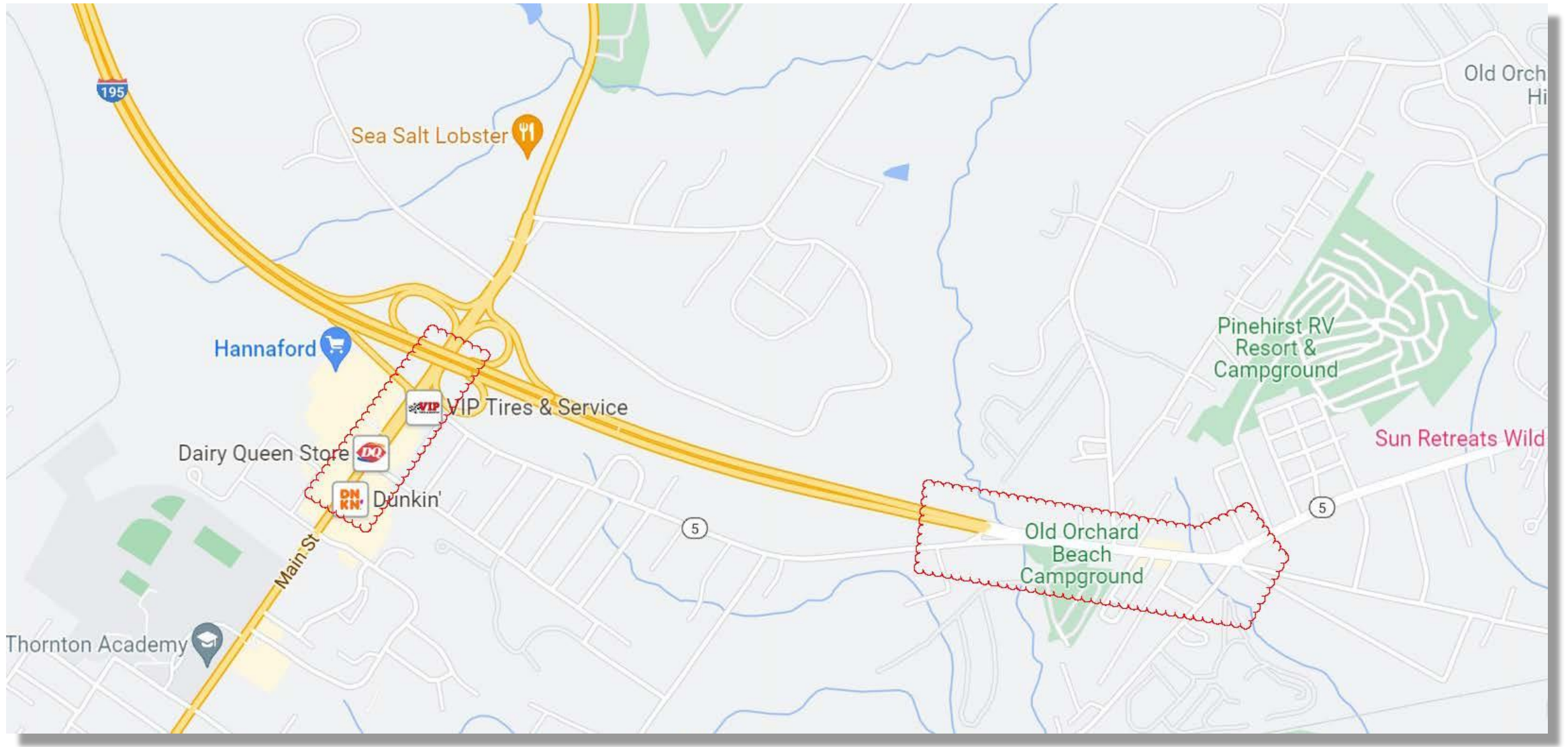
Municipality

- Old Orchard Beach (Mike Foster, Diana Asanza)
- Saco (Patrick Fox)

MaineDOT

- Marty Rooney





Prior Studies

2005 Intersection Study

2019 Traffic Calming Assessment

2021 Intersection Study (PPI)



Intersection Safety & Mobility Study

Ocean Park Rd, Saco Ave, Old Orchard Rd, Temple Ave
Old Orchard Beach, Maine

November 18, 2021

FINAL REPORT

Prepared for:

Town of Old Orchard Beach, Maine

Prepared by:

Gorrill Palmer | James Tasse Consulting, LLC



FINAL REPORT

HALFWAY ROTARY

T PLAN

CH, MAINE

nt June 27-Sept 10

ARP's Age Friendly group in options to calm traffic and intersection of Ocean Park Road. The conversation DT staff.

n of the project.

pedestrian "refuge islands." existing traffic islands (see ion. Due to emergency size were conservative,

ot available; they were

e 27 (two days after o Avenue heading east. The mph, and the 85th percentile decreases in the ar the installation was put in Ave after exiting the n by the new features in the



suggesting that the reduction low drivers down.

PREPARED FOR:
Town of Old Orchard Beach
1 Portland Avenue
Orchard Beach, Maine 04064

PREPARED BY:
ner Consulting Engineers, Inc.
P.O. Box 1237, 15 Shaker Road
Gray, Maine 04039
(207)657-6910

December 29, 2005

Comments from Prior Study

- Safety & operational concerns with Ocean Park Road
- Need for traffic signal at Smithwheel Road intersection
- Traffic calming and speed reduction needs
- Pedestrian and bicycle safety concerns



Purpose/Need Statement (Ocean Park Road)

The purpose of this study along the Ocean Park Road corridor from where it transitions from a controlled access to an uncontrolled access highway to the Halfway Intersection in Old Orchard Beach is to identify a range of implementable alternatives to improve safety while maintaining reasonable mobility and accessibility for all modes of transportation both now and into the future.

The needs of this study include improving safety at high crash locations within the corridor, speed level compliance, maintaining acceptable levels of service entering the Ocean Park Road corridor from I-195, improving the geometry and weaving actions and providing for improved access management within the corridor while improving accessibility for all transportation modes including but not limited to active transportation and vehicles accessing Ocean Park Road from intersecting local roads.

Purpose/Need Statement (Main Street, Saco)

The purpose of this study at the Main Street/Route 5 Intersection in Saco is to identify a range of implementable alternatives to improve safety and operations while maintaining reasonable mobility and accessibility for all modes of transportation both now and into the future.

The needs of this study include improving safety at two high crash locations at the I-195 interchange with Main Street, improving operations at the Main Street/Route 5 intersection, maintaining acceptable levels of service while improving accessibility for all transportation modes.

Study Scope

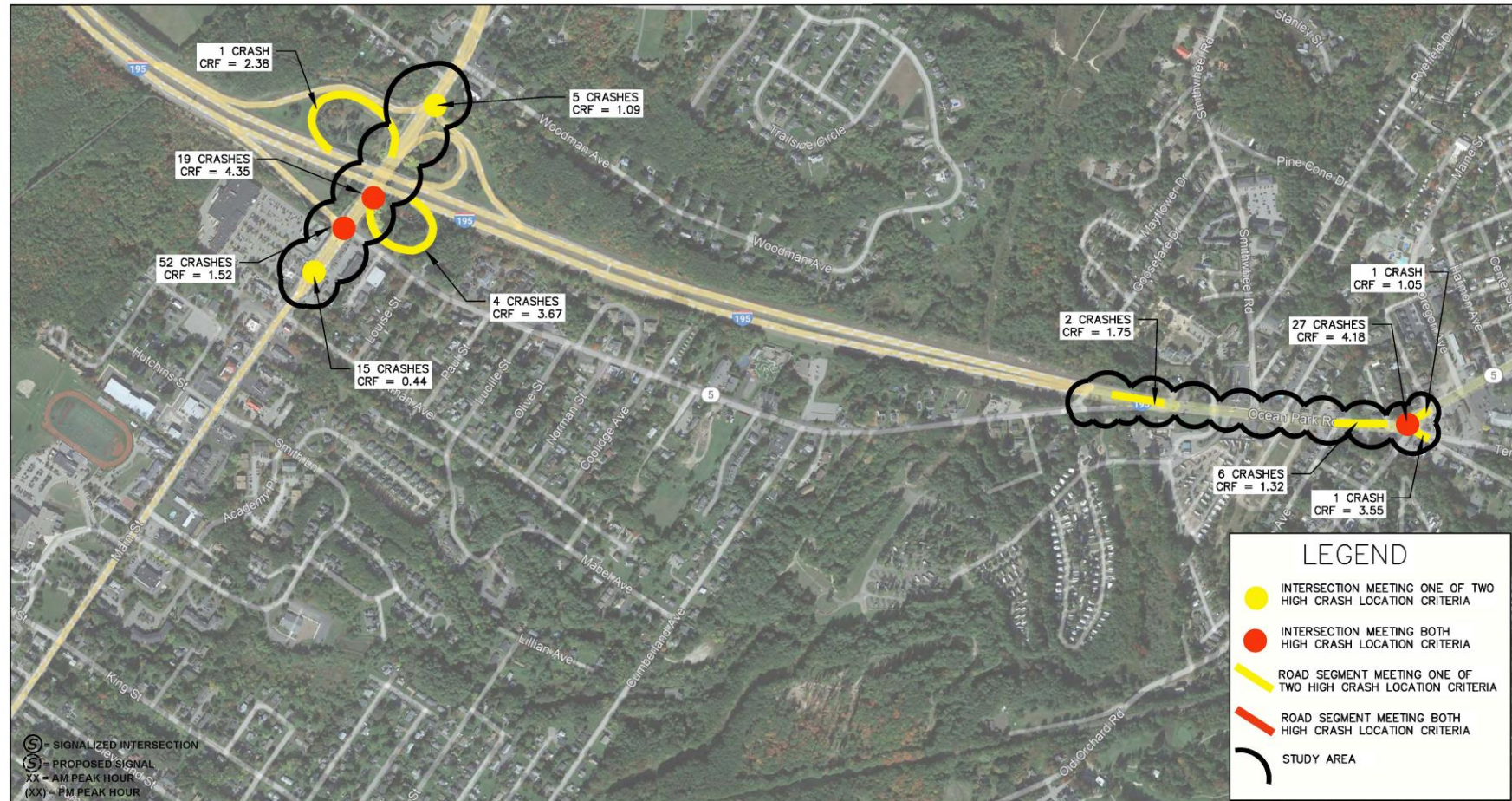
(Transportation Planning Study)

- Traffic operations
- Corridor safety (HCL)
- Reduce speeds
- Improve confusing geometry
- Review access management
- Pedestrian and bicycle accommodations
- Gateway opportunity



High Crash Locations

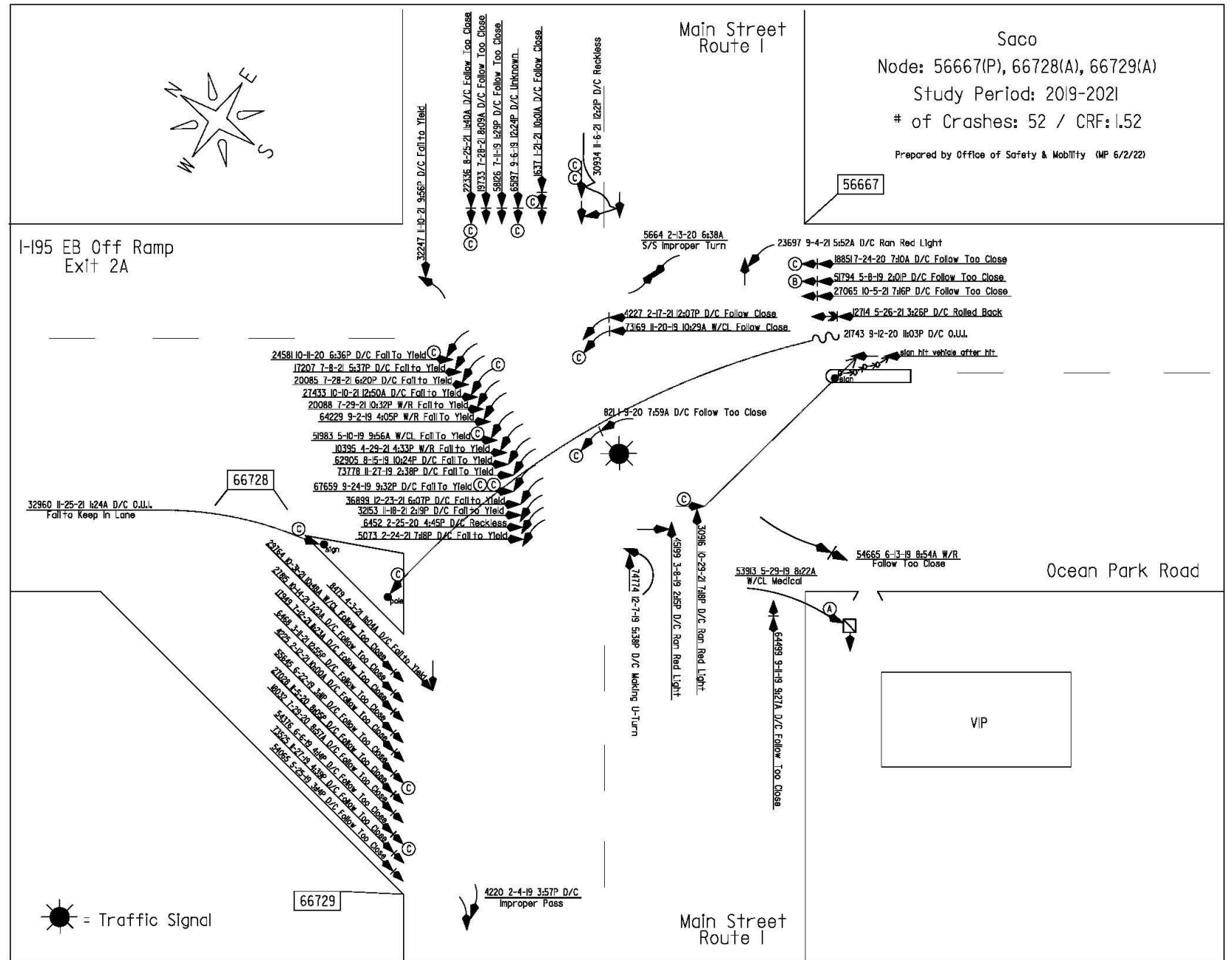
Ocean Park Road Study - High Crash Location Map (2019 - 2021)



High Crash Locations

Saco
Exit 2A Offramp at
Main Street

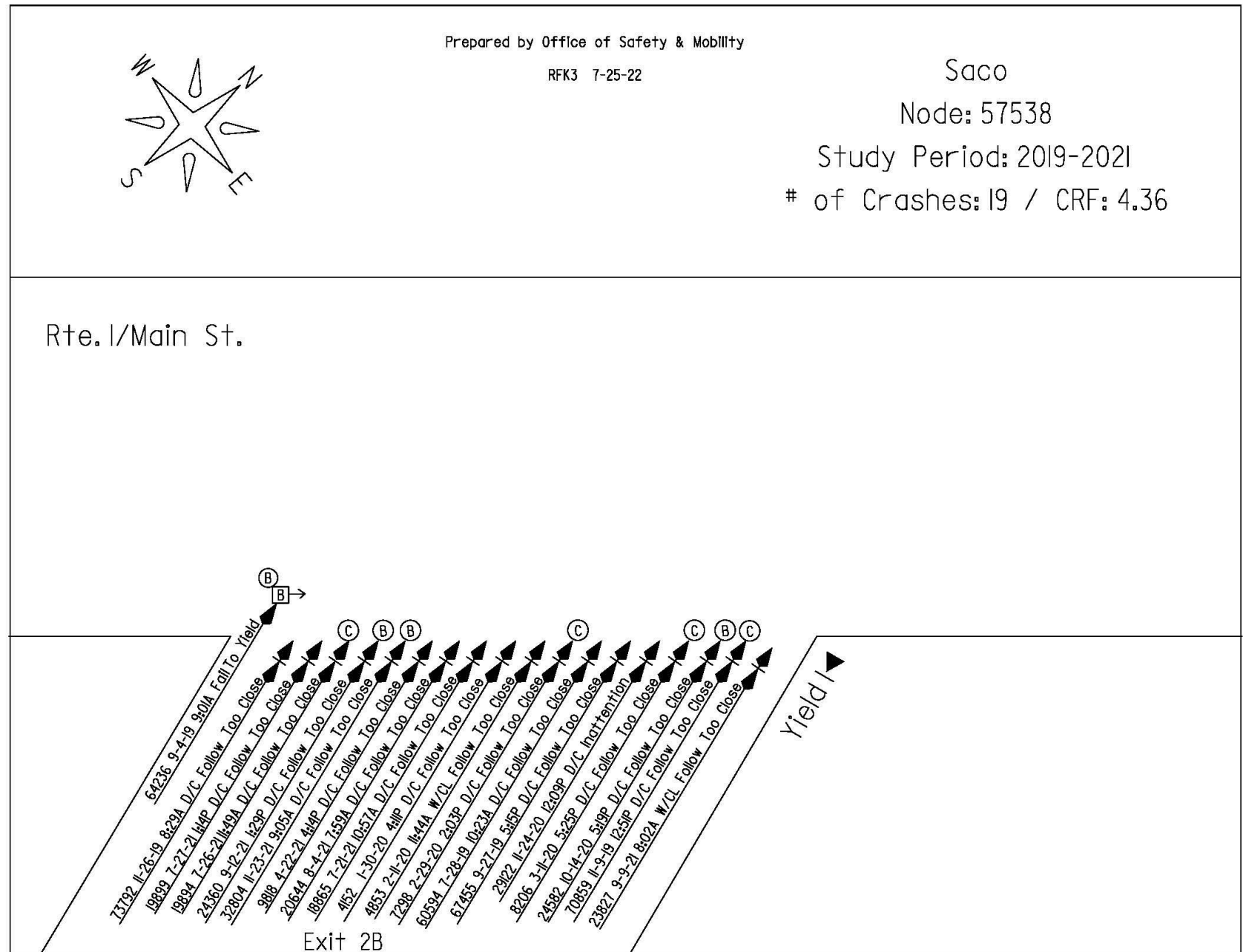
- 52 Crashes
- CRF – 1.52



High Crash Locations

Saco
Exit 2B Offramp at
Main Street

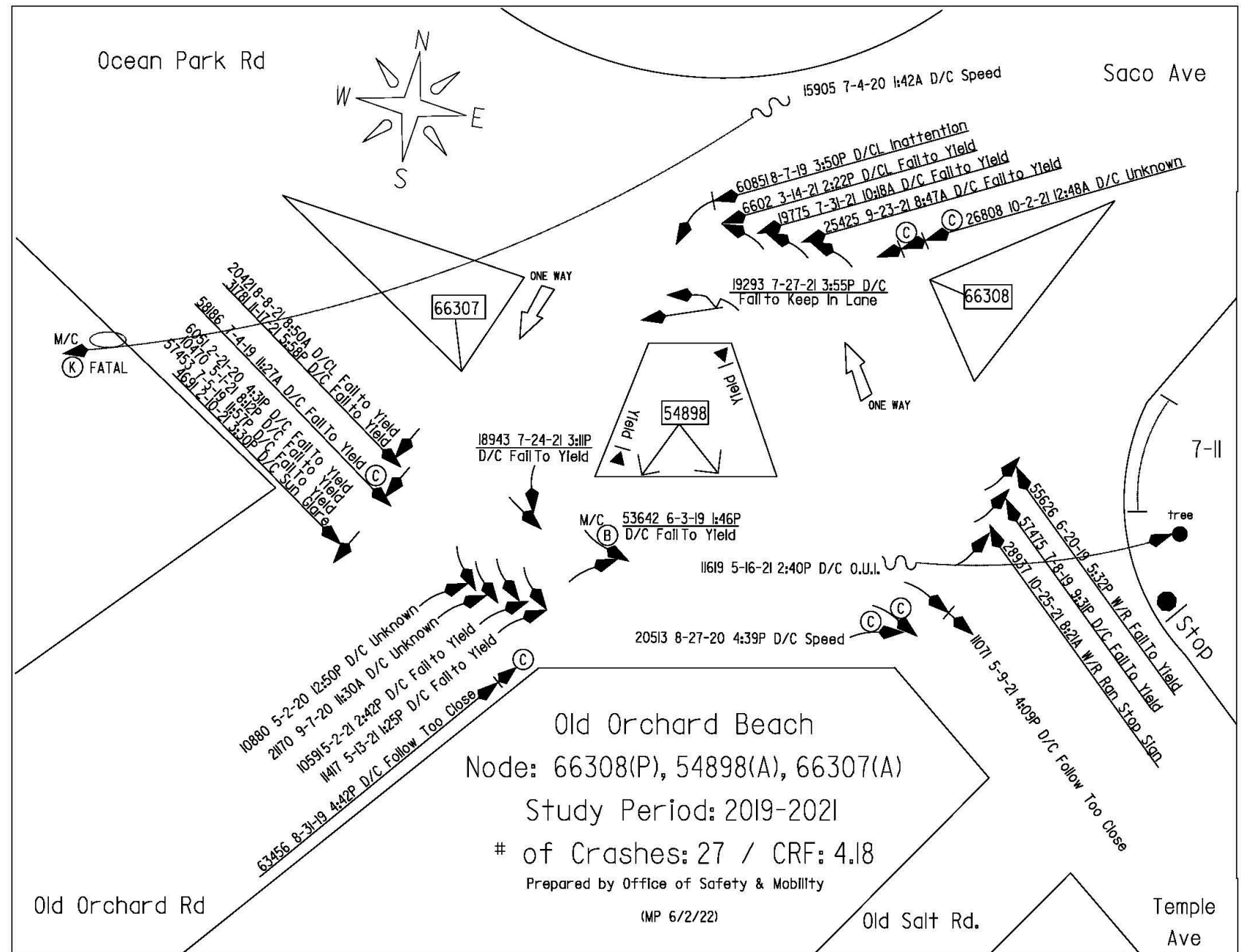
- 19 Crashes
- CRF – 4.36



High Crash Locations

Old Orchard Beach Halfway Intersection

- 27 Crashes
- CRF – 4.18



Focus Areas

- Main Street in Saco
- I-195 offramps
- Traffic operations
- Safety Improvements



Focus Areas

- I-195 transition
- Traffic calming
- Restricted Movements
- Pedestrian and bicycles



Focus Areas

- Weave section
- Driveways
- Side roads
- Traffic calming
- Pedestrian and bicycles



Focus Areas

- Smithwheel intersection
- Traffic operations
- Campground entrance
- Side roads
- Pedestrian and bicycles



Focus Areas

- Ocean Park Road, Saco, Temple, Old Orchard Road intersection
- Traffic operations
- Safety improvements
- Prior study recommendations updates



Schedule

- Public Mtg – Aug 2022
- Kickoff Mtg – Sep 2022
- Site Visit – Oct 2022
- Existing Conditions – Dec 2022
- Traffic Memo (existing & no-build) - Mar 2023
- Initial Concepts – Apr 2023
- Traffic Analysis & Footprint Sizes – May 2023



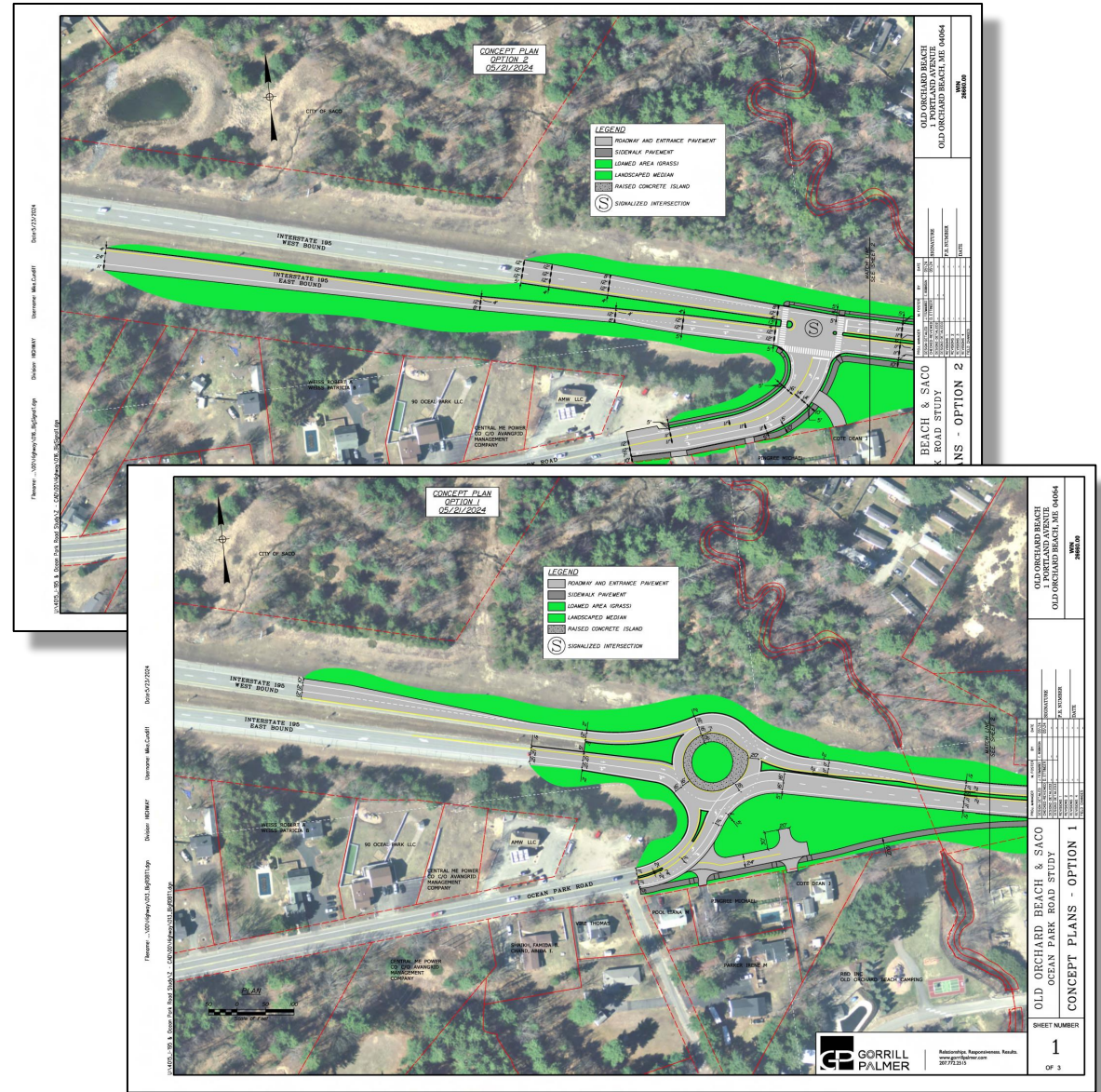
Schedule

- Rev Traffic analysis – Jul 2023
- Signal Warrants – Oct 2023
- DOT Mtg – Nov 2023
- Concepts – Apr 2024
- Traffic Memo – May 2024
- Public Mtg – Jun 2024

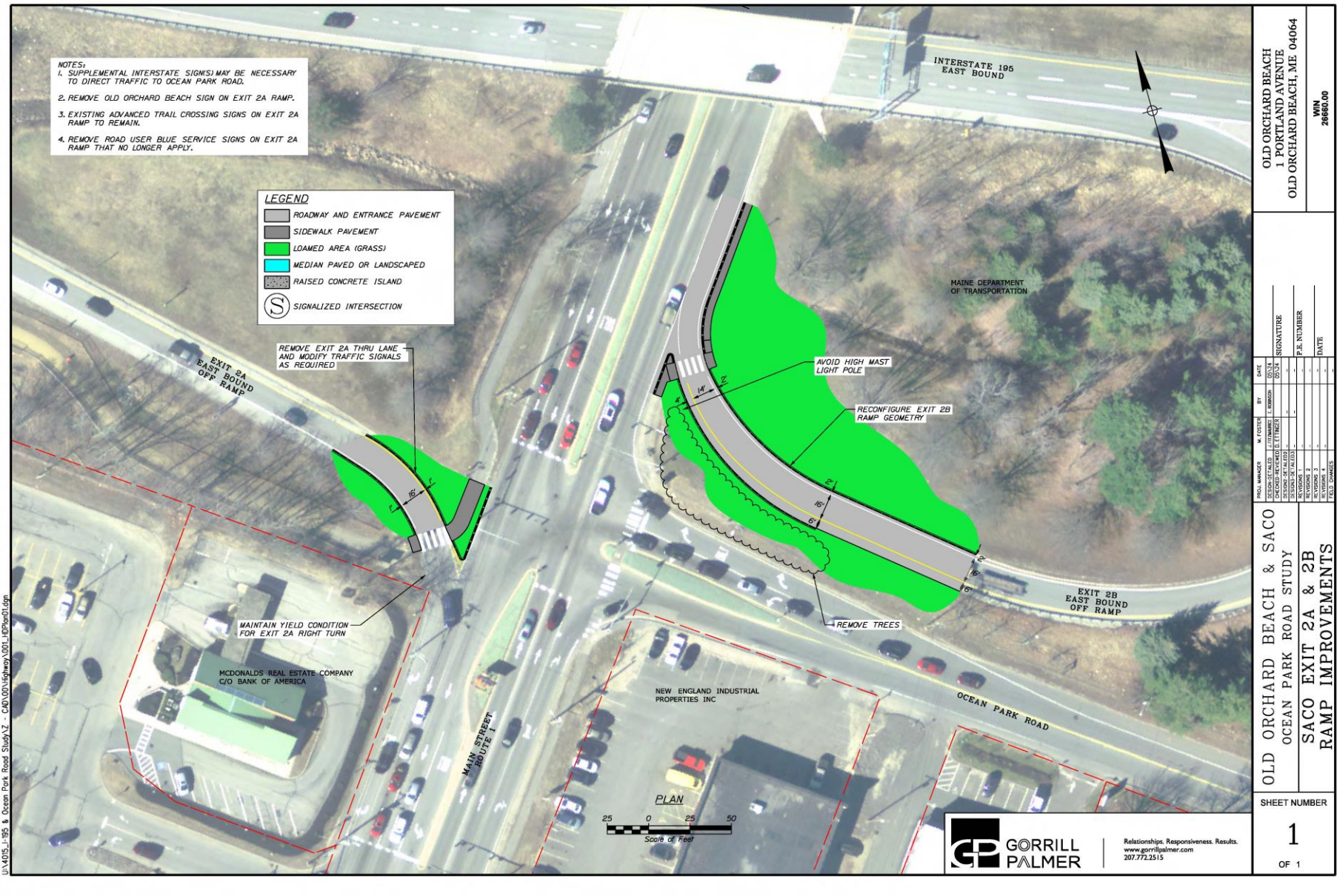


Concepts & Visioning

- Safety Improvements
- Intersection Improvements
- Confusing Geometry Improvements
- Pedestrian / Bike Accommodations
- Traffic Calming
- Access Management
- Pedestrian Connectivity
- Gateway Opportunity



File name: ... \00\Highway\001_HIPPlan01.dgn
Division: HIGHWAY
Username: Mike.Cundiff
Date: 5/21/2024

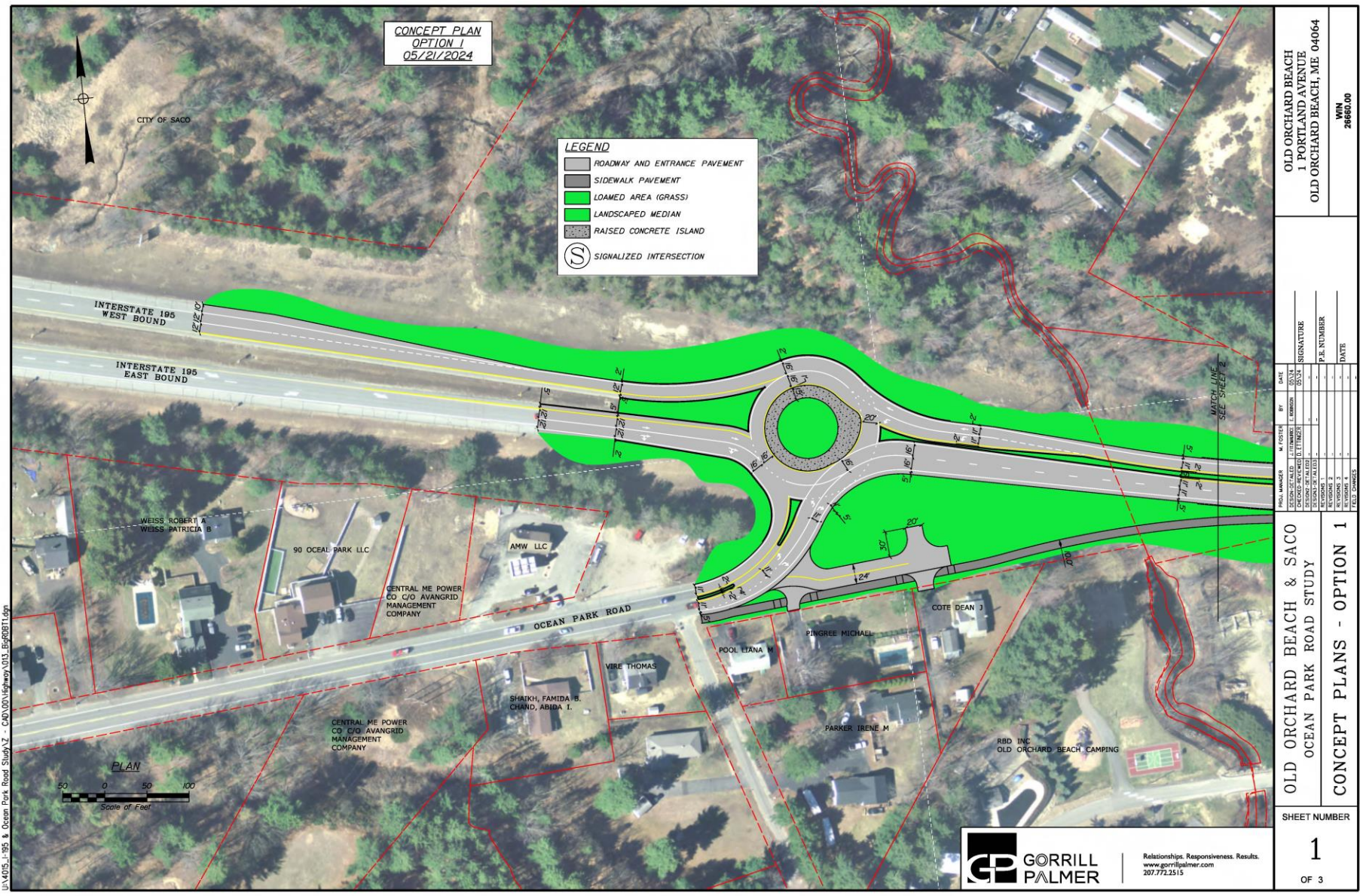


Concepts

- Safety Improvements
- Intersection Improvements
- Improve Confusing Geometry
- Pedestrian / Bike Accommodations
- Traffic Calming
- Access Management
- Pedestrian Connectivity
- Gateway Opportunity



File: \\00\Highway\013_Big\0811.dgn
Division: HIGHWAY
User: Mike.Cudill
Date: 5/23/2024



Concepts

- Safety Improvements
- Intersection Improvements
- Improve Confusing Geometry
- Pedestrian / Bike Accommodations
- Traffic Calming
- Access Management
- Pedestrian Connectivity
- Gateway Opportunity

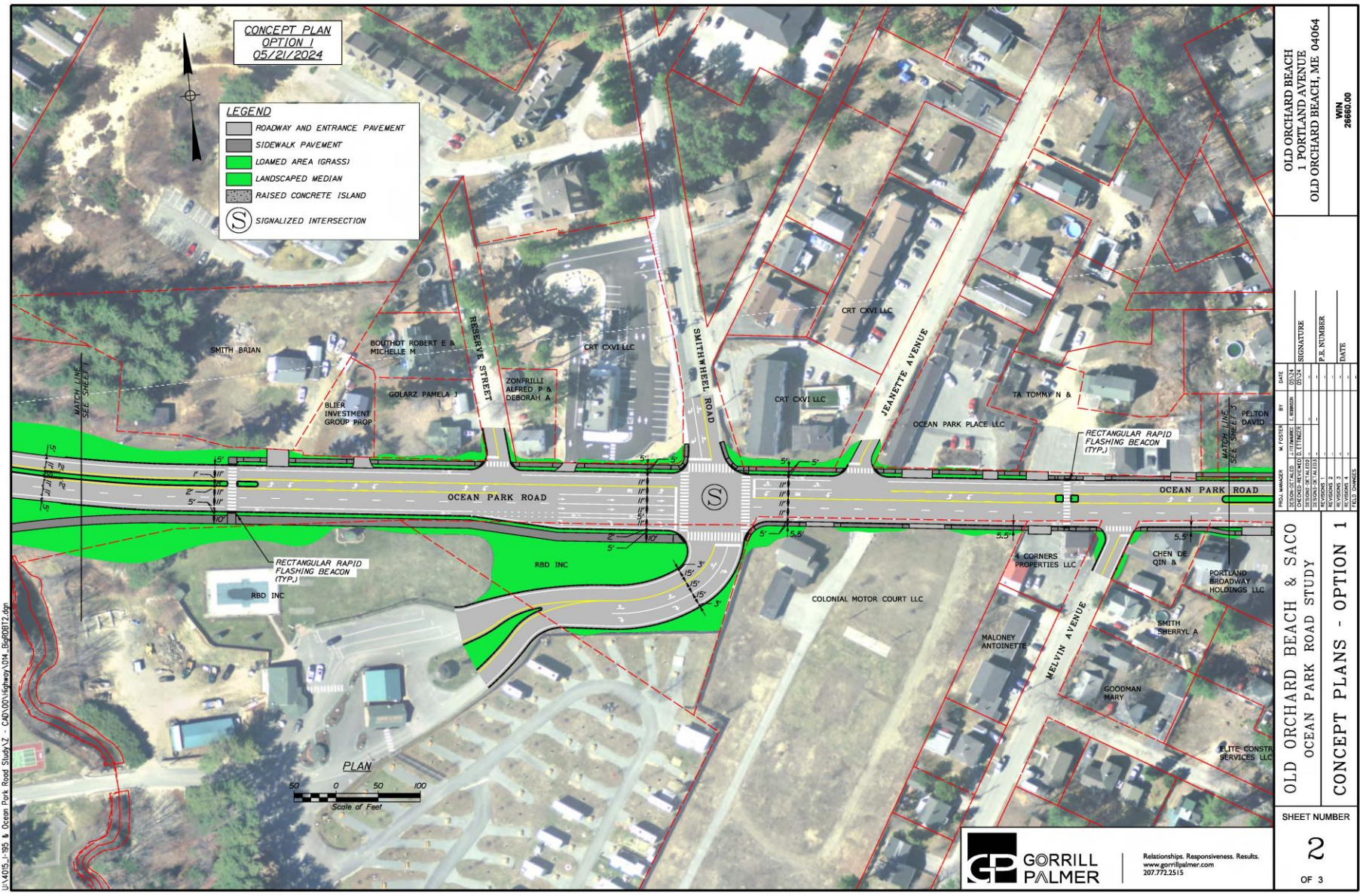




INTERSTATE 195 AND OCEAN PARK RD | CURRENT CONDITION



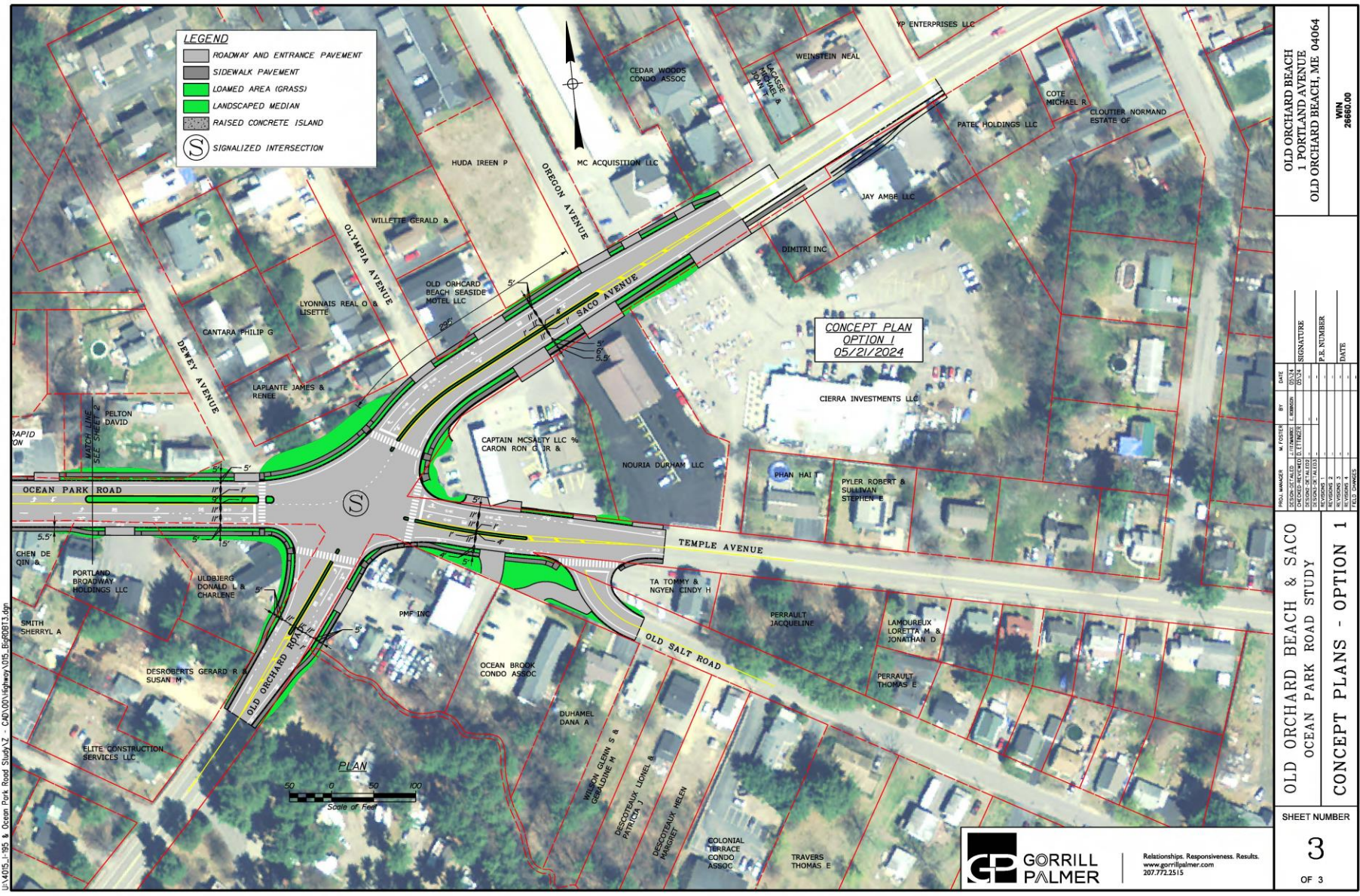
INTERSTATE 195 AND OCEAN PARK RD | PROPOSED ROUNDABOUT



Concepts

- Safety Improvements
- Intersection Improvements
- Improve Confusing Geometry
- Pedestrian / Bike Accommodations
- Traffic Calming
- Access Management
- Pedestrian Connectivity
- Gateway Opportunity

Date: 5/23/2024
 Username: Mike.Cundiff
 Division: HIGHWAY
 Filename: ...:\00\Highway\015_Big\00B13.dgn
 User: ...:\00\Highway\015_Big\00B13.dgn

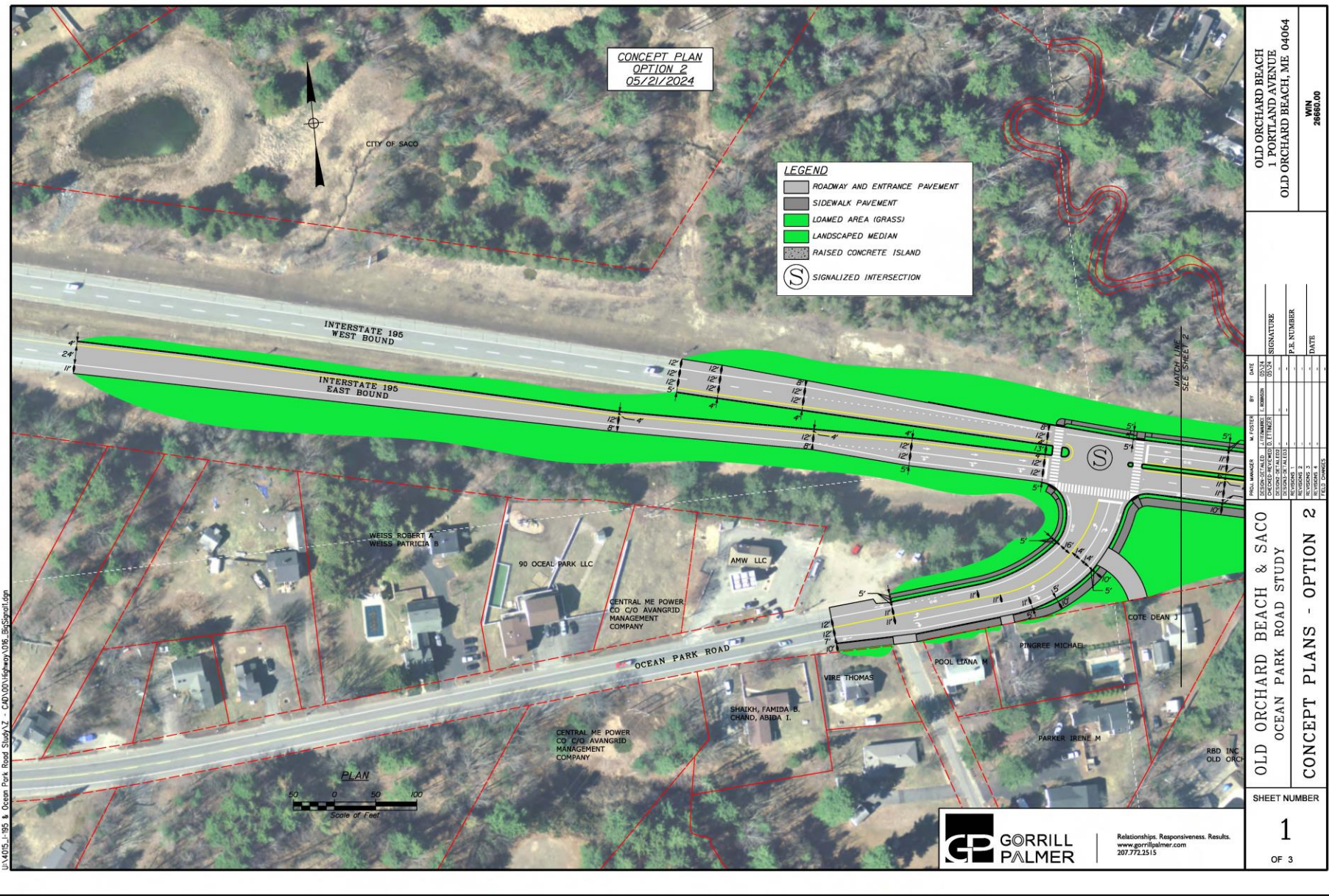


Concepts

- Safety Improvements
- Intersection Improvements
- Improve Confusing Geometry
- Pedestrian / Bike Accommodations
- Traffic Calming
- Access Management
- Pedestrian Connectivity
- Gateway Opportunity



U:\4005 - 195 & Ocean Park Road Study\2 - CAD\00\Highway\016_BigSignal.dgn
Filename: ... \00\Highway\016_BigSignal.dgn
Division: HIGHWAY
Username: Mike.Cundiff
Date: 5/23/2024



Concepts

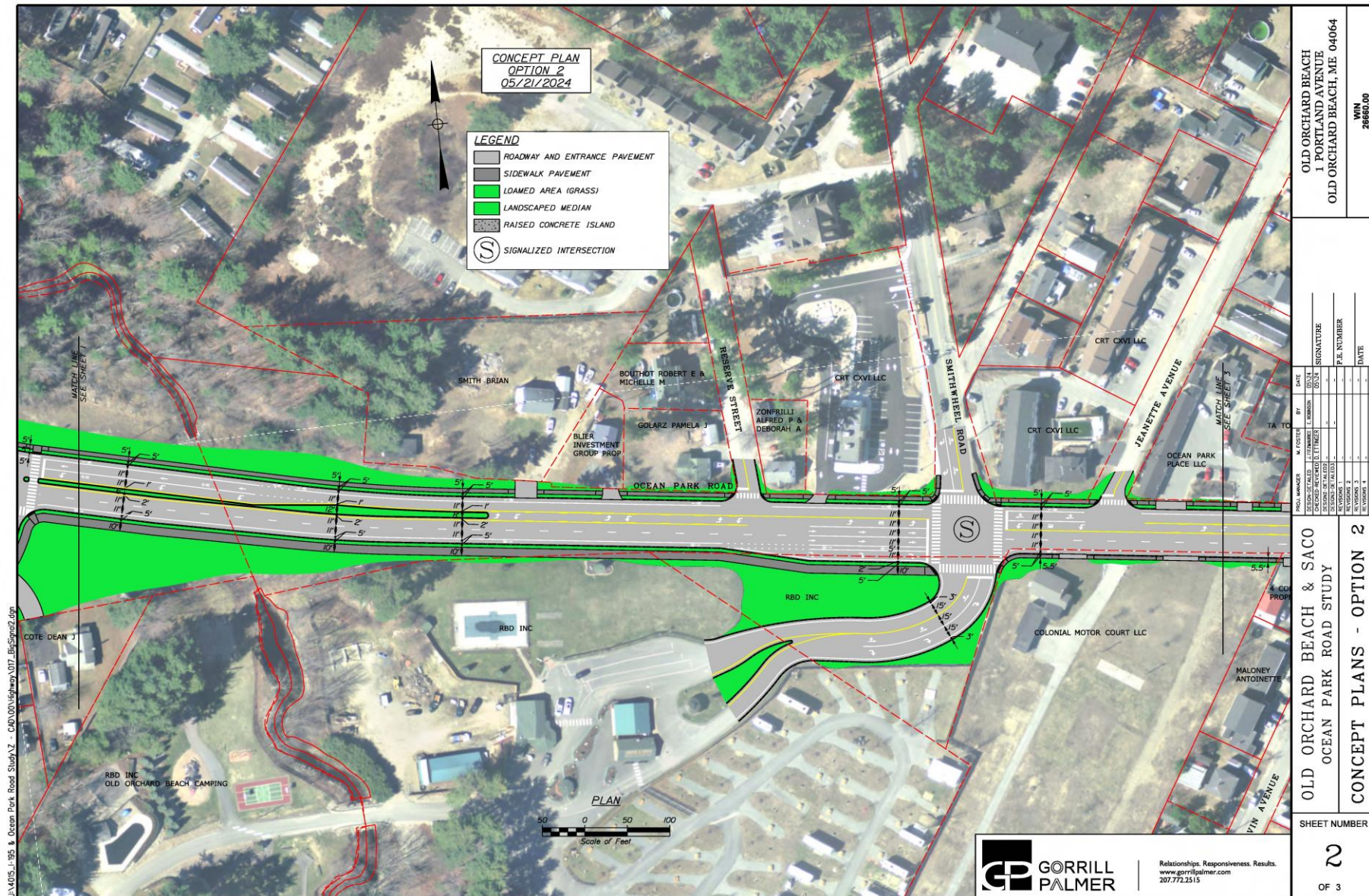
- Safety Improvements
- Intersection Improvements
- Improve Confusing Geometry
- Pedestrian / Bike Accommodations
- Traffic Calming
- Access Management
- Pedestrian Connectivity
- Gateway Opportunity



INTERSTATE 195 AND OCEAN PARK RD | CURRENT CONDITION



INTERSTATE 195 AND OCEAN PARK RD | PROPOSED INTERSECTION



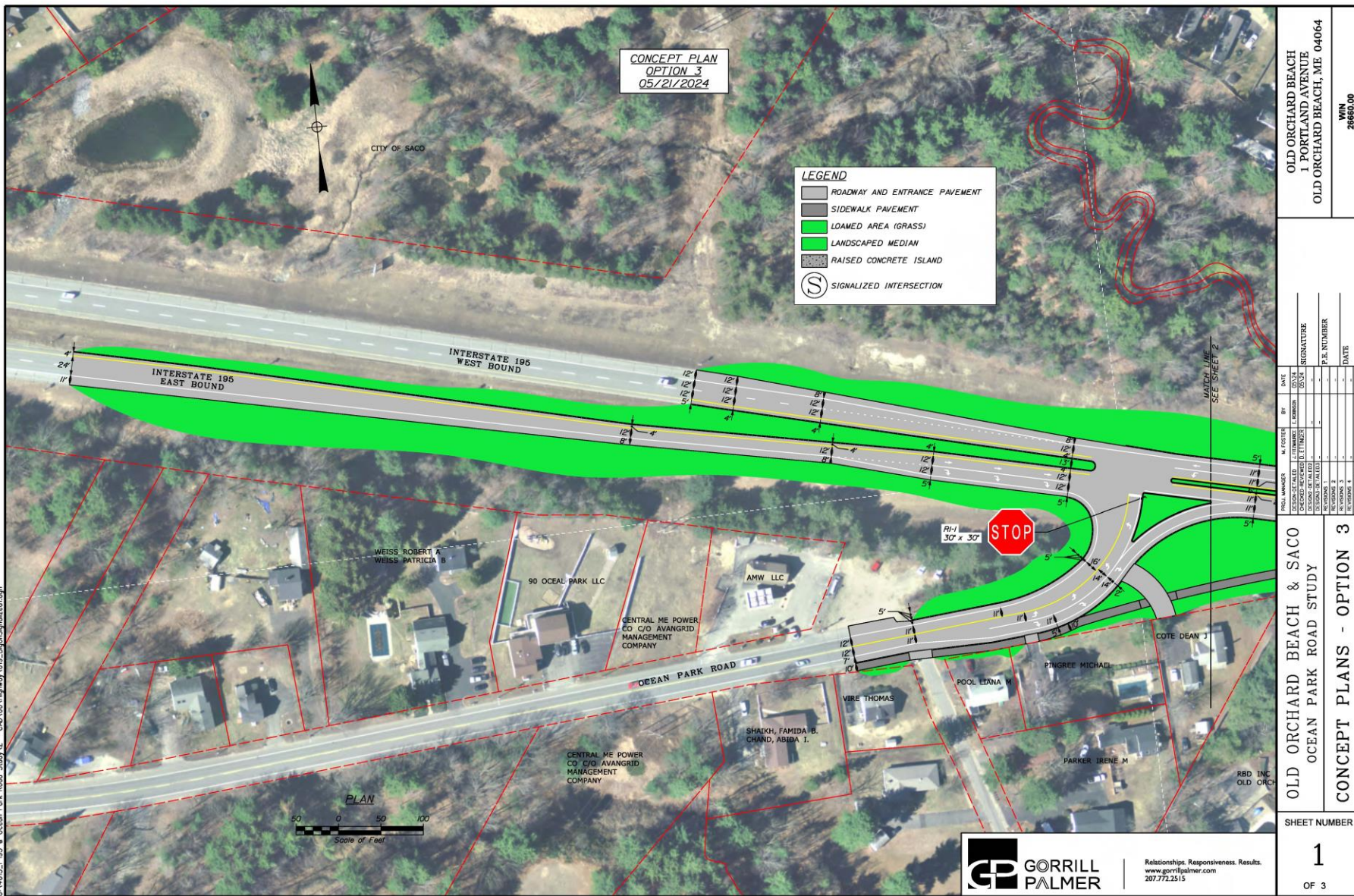
Concepts

- Safety Improvements
- Intersection Improvements
- Improve Confusing Geometry
- Pedestrian / Bike Accommodations
- Traffic Calming
- Access Management
- Pedestrian Connectivity
- Gateway Opportunity



Concepts

- Safety Improvements
- Intersection Improvements
- Improve Confusing Geometry
- Pedestrian / Bike Accommodations
- Traffic Calming
- Access Management
- Pedestrian Connectivity
- Gateway Opportunity



Concepts

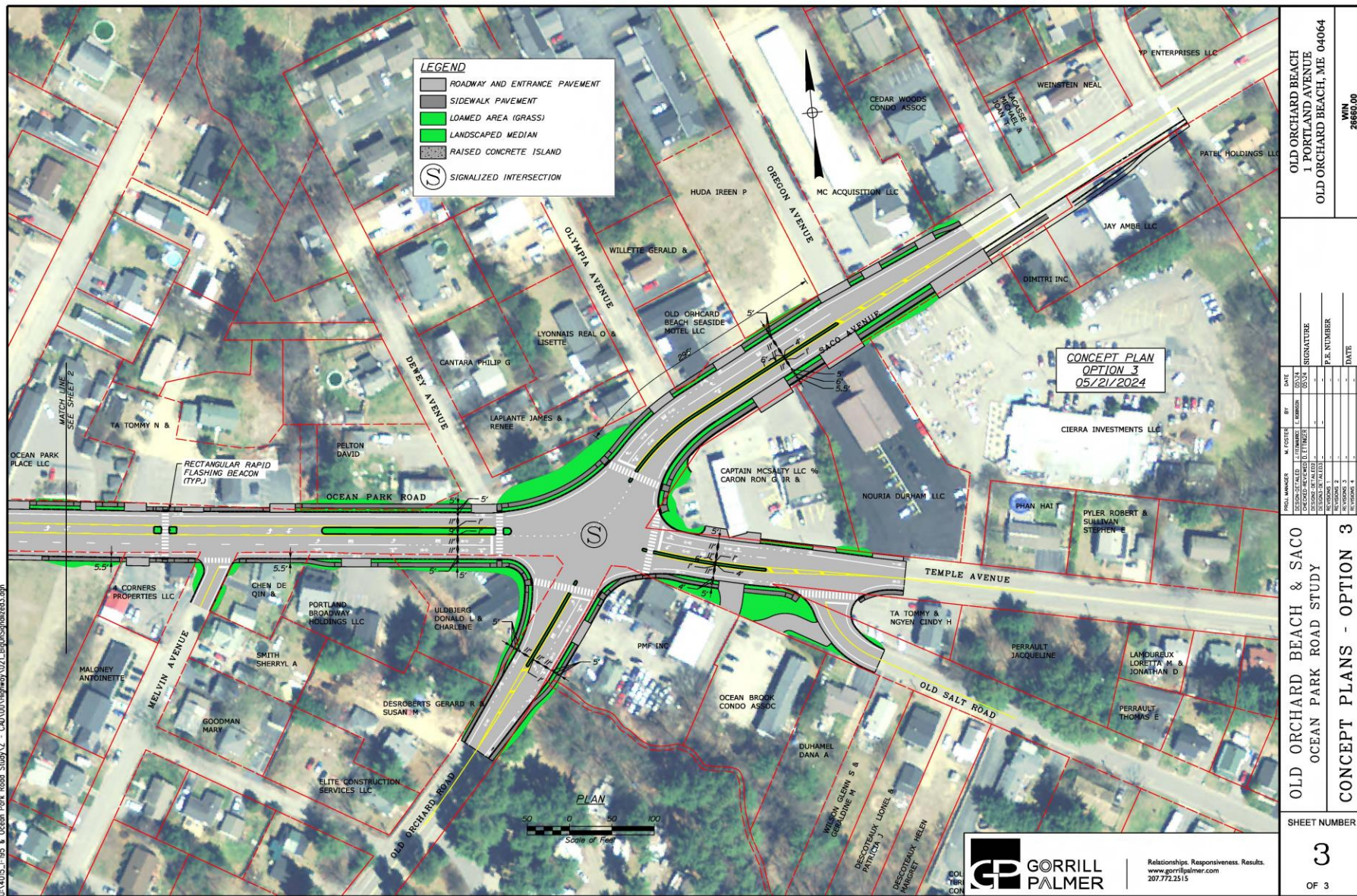
- Safety Improvements
- Intersection Improvements
- Improve Confusing Geometry
- Pedestrian / Bike Accommodations
- Traffic Calming
- Access Management
- Pedestrian Connectivity
- Gateway Opportunity



SMITHWHEEL RD AND OCEAN PARK RD | CURRENT CONDITION



SMITHWHEEL RD AND OCEAN PARK RD | PROPOSED INTERSECTION



Concepts

- Safety Improvements
- Intersection Improvements
- Improve Confusing Geometry
- Pedestrian / Bike Accommodations
- Traffic Calming
- Access Management
- Pedestrian Connectivity
- Gateway Opportunity



OCEAN PARK RD, SACO AVE, AND TEMPLE AVE | CURRENT CONDITION



OCEAN PARK RD, SACO AVE, AND TEMPLE AVE | PROPOSED INTERSECTION

| Goals | Options | | | | |
|----------------------------|-------------------|---|---|--------------------|---|
| | Normal Footprints | | | Reduced Footprints | |
| | 1 | 2 | 3 | 4 | 5 |
| Ped Accom. & Safety | | | | | |
| Provide Capacity | | | | | |
| Reduce Confusion & Weaving | | | | | |
| Smithwheel Operations | | | | | |
| Reduce Speeds | | | | | |
| Provide Left Turn Accom. | | | | | |

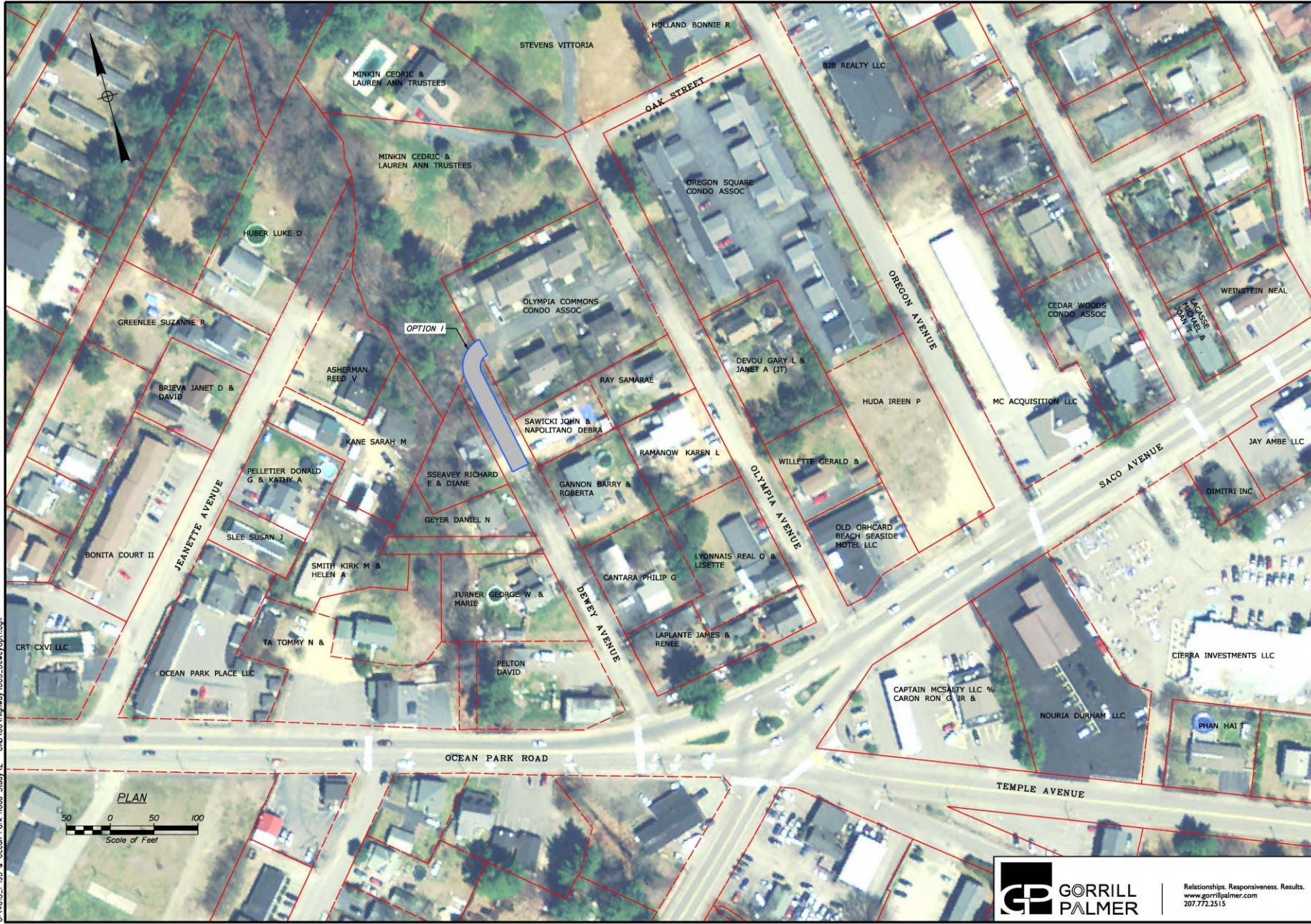
Date: 5/21/2024

Username: Mike.Cundiff

Division: HIGHWAY

Filename: ...\\00\\Highway\\005_DeweyOpt1.dgn

U:\\4015_1\\95 & Ocean Park Road Study\\XZ - CAD\\00\\Highway\\005_DeweyOpt1.dgn



| | | | |
|---|--|------------------|--|
| OLD ORCHARD BEACH 1 PORTLAND AVENUE OLD ORCHARD BEACH, ME 04064 | | WIN 26660.00 | |
| PROJECT MANAGER M. FOSTER | | DATE 05/24/24 | |
| DESIGN DETAIL J. LITMAN | | SIGNATURE | |
| DESIGNER J. LITMAN | | P.E. NUMBER | |
| REVISIONS 1 | | DATE | |
| REVISIONS 2 | | DATE | |
| REVISIONS 3 | | DATE | |
| REVISIONS 4 | | DATE | |
| REVISIONS 5 | | DATE | |
| REVISIONS 6 | | DATE | |
| REVISIONS 7 | | DATE | |
| REVISIONS 8 | | DATE | |
| REVISIONS 9 | | DATE | |
| REVISIONS 10 | | DATE | |

OLD ORCHARD BEACH & SACO
OCEAN PARK ROAD STUDY
DEWEY AVENUE
CONNECTION OPTIONS

SHEET NUMBER
1
OF 4



Relationships. Responsiveness. Results.
www.gorrillpalmer.com
207.772.2515

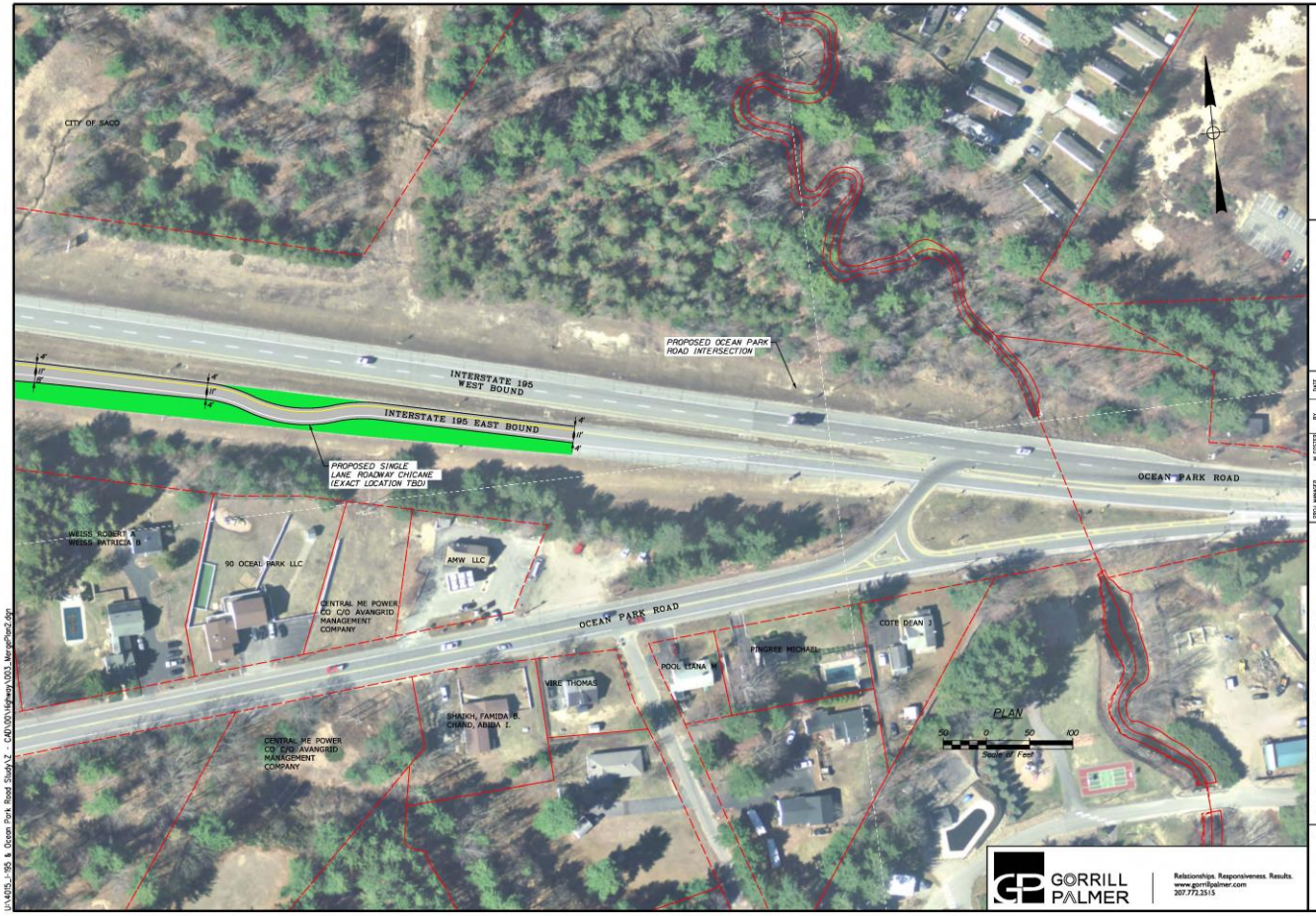
[illegible]



| | | | |
|-------------|---------|---------|---------|
| BY DATE | | PROJECT | DATE |
| DESIGNED | 5/27/24 | PROJECT | 5/27/24 |
| CHECKED | 5/27/24 | PROJECT | 5/27/24 |
| IN CHARGE | 5/27/24 | PROJECT | 5/27/24 |
| P.A. NUMBER | | DATE | |
| P.A. NUMBER | | DATE | |
| P.A. NUMBER | | DATE | |

OLD ORCHARD BEACH
1 PORTLAND AVENUE
OLD ORCHARD BEACH, ME 04064

WIN
24660.00



| | | | |
|-------------|---------|---------|---------|
| BY DATE | | PROJECT | DATE |
| DESIGNED | 5/27/24 | PROJECT | 5/27/24 |
| CHECKED | 5/27/24 | PROJECT | 5/27/24 |
| IN CHARGE | 5/27/24 | PROJECT | 5/27/24 |
| P.A. NUMBER | | DATE | |
| P.A. NUMBER | | DATE | |
| P.A. NUMBER | | DATE | |

OLD ORCHARD BEACH
1 PORTLAND AVENUE
OLD ORCHARD BEACH, ME 04064

WIN
24660.00

OLD ORCHARD BEACH & SACO
OCEAN PARK ROAD STUDY
INTERSTATE 195 TRAFFIC
CALMING IMPROVEMENTS

SHEET NUMBER
2
OF 2

Next Steps

- Public Comments, Edits, Revisions – Jun 2024
- Final Evaluations, Costs, ROW, Recommendations – Jul 2024
- Draft Report – Aug 2024
- Final Report – Oct 2024



Public Input

- ☐ Safety Improvements
- ☐ Intersection Improvements
- ☐ Reducing Driver Confusion
- ☐ Pedestrian / Bike Accommodations
- ☐ Traffic Calming
- ☐ Access Management
- ☐ Pedestrian Connectivity
- ☐ Gateway Opportunities
- ☐ Other Items



INTERSTATE 195 AND OCEAN PARK RD | PROPOSED ROUNDABOUT



INTERSTATE 195 AND OCEAN PARK RD | PROPOSED INTERSECTION